



MendelNet

Conference Brno 2021



Editors:

Radim Cerkal

Natálie Březinová Belcredi

Lenka Prokešová

Proceedings of 28th
International PhD Students Conference

10 November 2021, Brno, Czech Republic

Mendel University in Brno
Faculty of AgriSciences



MendelNet 2021

Proceedings of 28th International PhD Students Conference
10 November 2021, Brno, Czech Republic

Editors: Radim Cerkal, Natálie Březinová Belcredi, Lenka Prokešová

The MendelNet 2021 conference would not have been possible without the generous support of The Special Fund for a Specific University Research according to the Act on the Support of Research, Experimental Development and Innovations and the **support of:**

BIOMIN Czech s.r.o.

kontroluje.me

PELERO CZ o.s.

Profi Press s.r.o.

Research Institute of Brewing and Malting, Plc.

All contributions of the present volume were peer-reviewed by two independent reviewers. Acceptance was granted when both reviewers' recommendations were positive.

ISBN 978-80-7509-821-4

Scientific Committee:

Assoc. Prof. Ing. Radim Cerkal, Ph.D. (Chair)

Prof. Ing. Radovan Pokorný, Ph.D.

Prof. Ing. Gustav Chládek, CSc.

Assoc. Prof. Ing. Radovan Kopp, Ph.D.

Assoc. Prof. Ing. Josef Suchomel, Ph.D.

Prof. Dr. Ing. Milada Šťastná

Assoc. Prof. Ing. Šárka Nedomová, Ph.D.

Assoc. Prof. Ing. Pavel Hanáček, Ph.D.

Prof. MVDr. Zbyšek Sládek, Ph.D.

Assoc. Prof. Ing. Vojtěch Kumbár, Ph.D.

Assoc. Prof. RNDr. Ondřej Zítka, Ph.D.

Organizing Committee:

Ing. Natálie Březinová Belcredi, Ph.D. (Chair)

Ing. Lucie Melišová, Ph.D.

Ing. Lenka Prokešová

Mgr. Patrik Vacek

PREFACE

Each year, the editors of the volume you are about to read are tasked with the responsibility of putting a coherent form to the proceedings from MendelNet, the international PhD Students Conference of the Faculty of AgriSciences of Mendel University in Brno.

The event which reached, this year, on November 10, 2021, its 28th edition, is traditionally aimed at both under and postgraduate students from the Czech Republic, Europe and beyond, and proudly welcomes the participants of various professional and cultural backgrounds. And while this time the people could not gather on-site due to globally-imposed covid-19 restrictions, the conference swiftly transformed itself into a virtual and fascinating beehive of results, opinions and brand new research paths and ideas.

Here in Brno, under the spell of great genetician G. J. Mendel and the guidance of skilled senior researchers and supervisors, students can introduce, defend and discuss their scientific results while those who do not feel confident enough to present and pen their paper in English are invited to join as spectators and follow-up discussion participants.

The best submissions are, after rigorous peer-review process, collected here and range from plant and animal production to fisheries and hydrobiology to wildlife research while agroecology and rural development, food technology, plant and animal biology, techniques and technology and applied chemistry and biochemistry also belong to the core areas being investigated.

The collection as varied and huge as this can succeed only as a team effort, both on authors' and editors' side, so we would like to express our thanks and gratitude to all committees and reviewers both for their outstanding work and invaluable comments and advice.

The Editors

TABLE OF CONTENTS

PLANT PRODUCTION

Comparing of observed and simulated field crop production in HERMES2Go model at Hněvčeves locality BOHUSLAV J., KERSEBAUM K.C., MADARAS M., HLAVINKA P., TRNKA M., ZALUD Z.	13
Modelling the onset of phenological phases of spring barley (<i>Hordeum vulgare</i> L.) DIZKOVA P., BARTOSOVA L., HAJKOVA L., BALEK J., BLAHOVA M., BOHUSLAV J., POHANKOVA E., TRNKA M., ZALUD Z.	19
The effect of milk thistle cultivation technology [<i>Silybum marianum</i> (L.) Gaertner] on the yield and contained compounds FOJTIKOVA L., BRADACOVA M., KUDLACKOVA B., BJELKOVA M., PLUHACKOVA H.	25
Yield formation parameters of winter wheat under two CO ₂ levels in water sufficient and depleted environment HLAVACOVA M., KLEM K., VESELA B., FINDUROVA H., HLAVINKA P., SMUTNA P., HORAKOVA V., SKARPA P., TRNKA M.	31
Use of unmanned aerial remote sensing for in-season diagnosis of winter wheat nitrogen status HORNIACEK I., LUKAS V., NEUDERT L., DUFFKOVA R., MEZERA J., SMUTNY V.	37
Seed vigour effected by total polyphenols content JOVANOVIC I., EDISON ALBA-MEJIA J., PSOTA V., STREDA T.	43
A variety of transpiration in the young spruce stands with different thinning management KYSELOVA I., SZATNIEWSKA J., VAGNER L., KREJZA J., PAVELKA M.	49
Estimation of winter wheat nitrogen status and prediction of crop yield by satellite and proximal sensing MEZERA J., LUKAS V., ELBL J., NEUDERT L., HORNIACEK I., SMUTNY V.	55
Influence of vermicompost on growth parameters and content of chlorophylls in maize during vegetation NEUPAUER J., KOVACIK P.	61
Interactive effects of adaptation technology, based on no-till sowing into the mulch of cover crop residues, and nitrogen nutrition on photosynthetic performance of maize under drought stress OPOKU E., HOLUB P., FINDUROVA H., VESELA B., KLEM K.	67
A comparison of the efficiency of pheromone lures on the <i>Cydia pomonella</i> (codling moth) PRAZANOVA Z., SEFROVA H.	73
Evaluation of nutritional potential of selected sorghum varieties in relation to different types of soil localities RIHACEK M., NOVOTNY J., ZALESAKOVA D., HORAKOVA L., MRKVICOVA E., PAVLATA L., STASTNIK O., SMUTNY V., RABEK M.	78

The effect of biochar co-application with soil prebiotic on biomass production and soil basal respiration	
RUZICKA D., POLACH V., ZAHORA J.	83
Effect of elevated CO ₂ concentration and nitrogen nutrition on mais response to short-term high temperature and drought stress	
SIMOR J., KLEM K.	88
Estimation of winter wheat yield using machine learning from airborne hyperspectral data	
SVIK M., PIKL M., JANOUTOVA R., VESELA B., SLEZAK L., KLEM K., HOMOLOVA L.	94
The effect of different technical details of drip irrigation on fruit yield and annual increments of "Gala" apple	
VASTIK L., MASAN V., BURG P., ZEMANEK P., HIC P.	100

ANIMAL PRODUCTION

Different selenium sources in medium-slow growing broiler chicken's diets and their influence on blood biochemical and performance parameters	
HORAKOVA L., NOVOTNY J., ZALESAKOVA D., RIHACEK M., ROZTOCILOVA A., STASTNIK O., MRKVICOVA E., PAVLATA L.	107
The influence of organic and inorganic selenium sources on the metabolism of broiler chickens	
HORAKOVA L., NOVOTNY J., ZALESAKOVA D., RIHACEK M., STASTNIK O., MRKVICOVA E., PAVLATA L.	113
The effect of stage and number of lactations on the incidence of milking success when using Automatic Milking Systems	
JENIK D., FALTA D., KOPEC T., VECERA M., LATEGAN F., CHLADEK G.	118
Evaluation of reproductive parameters at a farm specializing in breeding of Czech Fleckvieh dairy cows	
KOCIANOVA K., FILIPCIK R., RECKOVA Z., PESAN V.	122
Determination of the effectiveness of disinfectants containing organic acids for bovine footbaths	
LANGOVA L., MACHACEK M., HAVLICEK Z., NEMCOVA P., NOVOTNA I.	126
The effect of breed on body indices in draft horses in Czech Republic	
MATUSKOVA A., COUDKOVA V., FILIPCIK R., MARSALEK M.	131
Methods for assessing the health of the limbs and their relationship to the duration of treatment for footrot: a pilot study	
NEMCOVA P., HAVLICEK Z., LANGOVA L., NOVOTNA I.	137
The influence of different feed particle size in broiler diets on the performance parameters and digestive viscosity	
NOVOTNY J., HORAKOVA L., ZALESAKOVA D., RIHACEK M., KUMBAR V., STASTNIK O., PAVLATA L.	142

The effect of cumin (<i>Carum carvi</i> L.) on broiler chickens performance parameters NOVOTNY J., HORAKOVA L., ZALESAKOVA D., RIHACEK M., MRKVICOVA E., PLUHACKOVA H., STASTNIK O., PAVLATA L.	148
Determination of optimal insemination time in sheep by assessing cervical mucus arborization PESAN V., HOSEK M., FILIPCIK R., SOUSKOVA K., PESANOVA TESAROVA M.	152
Effect of storage and preincubation on hatching egg quality and hatchability in meat type chicken PESANOVA TESAROVA M., LICHOVNIKOVA M., FOLTYN M.	158
Evaluation of Holstein cows originated from embryo transfer POPELKOVA M., FILIPCIK R., KOPEC T., RECKOVA Z.	163
Condition of honeybee colonies overwintered with winter stores enriched by extracts of polypore mycelia PROUZA J., MUSILA J., PRIDAL A.	166
The effect of cumin (<i>Carum carvi</i> L.) on medium-slow growing chickens performance parameters RIHACEK M., NOVOTNY J., HORAKOVA L., ZALESAKOVA D., ROZTOCILOVA A., MRKVICOVA E., STASTNIK O., PAVLATA L.	171
The influence of different variations of selenium sources in diets on blood biochemical parameters in fast growing broiler chickens ZALESAKOVA D., NOVOTNY J., RIHACEK M., HORAKOVA L., ROZTOCILOVA A., STASTNIK O., MRKVICOVA E., PAVLATA L.	176
Blood biochemical parameters in the evaluation of chicken nutrition during the starter feed period ZALESAKOVA D., RIHACEK M., NOVOTNY J., HORAKOVA L., STASTNIK O., MRKVICOVA E., PAVLATA L.	181
The effect of housing technology on the milk performance of Holstein dairy cows in selected breeding ZAPLETALOVA L., VECERA M., CHLADEK G., POPELKOVA M., LANGER R.	187

FISHERIES AND HYDROBIOLOGY

Is oral application of plastic particles able to provoke the oxidative stress and alter expression of an immunity related genes in rainbow trout? HOLLEROVA A., HODKOVICOVA N., BLAHOVA J., FALDYNA M., MEDKOVA D., MARES J., SVOBODOVA Z.	193
Selected biochemical parameters of two common carp (<i>Cyprinus carpio</i>) breeds infected with koi herpesvirus MACHAT R., LEVA L., POJEZDAL L., FALDYNA M.	197
Effects of pesticides on catfish (<i>Silurus glanis</i>) embryos MEDKOVA D., LAKDAWALA P., DOUBKOVA V., BLAHOVA J., HOLLEROVA A., WEISEROVA Z., HODKOVICOVA N., SVOBODOVA Z., MARES J.	200

Toxicity tests on <i>Daphnia magna</i> MELEZINKOVA P., POSTULKOVA E., KOPP R.	203
Rotifers and microcrustaceans communities in natural and restored peatlands PFEIFER L., SORF M.	208
Use of peas in fish nutrition ZEZULA F., MARES J., MALY O., SORF M., PFEIFER L.	213

WILDLIFE RESEARCH

Contribution to the faunistic research of beetles (Insecta: Coleoptera) in Natural Monument Růžový kopec near Mikulov KOPR D.	219
Importance of cereals for population dynamics of common voles (<i>Microtus arvalis</i>) – a case study from Moravia (Czech Republic) SKOPALOVA G., SIPOS J., SUCHOMEL J.	224
Influence of different forage mixtures treated selenium and zinc on pollinators SODOMOVA K., HYBL M., SIPOS J.	229

AGROECOLOGY AND RURAL DEVELOPMENT

Integrated national-scale assessment of climate change impacts on agriculture: the case of the Czech Republic ARBELAEZ GAVIRIA J., BOERE E., HAVLIK P., TRNKA M.	236
Analysis of small forest catchments evapotranspiration determined by precipitation/runoff measurements, remote sensing model DisALEXI and water balance model SoilClim GHISI T., FISCHER M., OULEHLE F., ZALUD Z., TRNKA M.	242
Analysis of awareness of the implementation of agricultural production in Czech Republic LANGER R., DRYŠLOVA T.	248
Historical and contemporary endangered wetland species of the southeastern part of the Bohemian-Moravian Highlands OULEHLA J., JIROUSEK M., STASTNA M.	252
Variation of glomalin content in the Czech soils and the relationships to the chemical soil characteristics and climatic regions POLACH V., PATRA S., KAREL K.	258
Determining the phytotoxicity of rubber granulate from waste tires SOURKOVA M., ADAMCOVA D.	263
Optimization of ATS system for pollutants removing TARBAJOVA V., CHALOUPSKY P., HUSKA D.	268

FOOD TECHNOLOGY

Development of 3D printing in food processing BAUER J., JANOUŠ S., BENO F., SEVČÍK R.	275
Use of leftover bread for beer production DYMCHENKO A., GERSL M., GREGOR T.	281
Reduction of weight loss after defrosting of meat using a gelatin-based coating MARTINEK J., GAL R., MOKREJS P., SUCHACKOVÁ K.	286
Quality of malt made from current and historical malting barley varieties NEMETHOVÁ M., PSOTA V., GREGOR T.	292
Encapsulation of fortifying ingredients in colloidal emulsions of lecithin ONDROUSKOVÁ K., LAPČIKOVÁ B., LAPČÍK L., SZYK WARSZYŃSKA L., BURESOVÁ R.	296
Quality of superworm (<i>Zophobas morio</i>) fats determined by Raman spectroscopy PECOVÁ M., PLEVA B., POSPIECH M.	302
Effects of a preparation based on a functional collagen polymer on the skin in the periorbital area PROKOPOVÁ A., PAVLACKOVÁ J., GAL R., MOKREJS P.	307
A comparative study on the selected quality properties of frankfurters with using chicken breast meat SLOVACEK J., GROSSOVÁ L., SNUPIKOVÁ N., PIECHOWICZOVÁ M., STASTNIK O., JUZL M.	313
Possibilities of use and quality parameters of beaver canned meat (<i>Castor fiber</i> L.) SLOVACEK J., JUZL M., POPELKOVA V., PIECHOWICZOVÁ M., DRIMAJ J., MIKULKA O.	318
Quality of beer made from bakery leftovers SNUPIKOVÁ N., GROSSOVÁ L., HRIVNÁ L., GREGOR T., KOURILOVÁ V., DUFKOVÁ R., JUZL M.	324

PLANT BIOLOGY

Effects of intermittent-direct-electric-current (IDC) on growth and content on photosynthetic pigments in hemp (<i>Cannabis sativa</i> L.) BALOG N., VYHNANEK T., KALOUSEK P., SCHREIBER P.	331
Method for simultaneous detection of <i>Phytophthora infestans</i> proteins and DNA in <i>Solanum tuberosum</i> samples BERKA M., BERKOVÁ V., KOPECKÁ R., GREPLOVÁ M.	337
Characterization of the potential biological control <i>Acremonium alternatum</i> using omics approaches BERKOVÁ V., MENŠIKOVÁ S., AUER S.	342

Atmospheric CO ₂ concentration, light intensity, and nitrogen nutrition affect spring barley response to drought and heat stress FINDUROVA H., VESELA B., OPOKU E., KLEM K.	348
Determination of chlorophyll content, RWC and LDMC in leaves of sorghum and maize during two different phenological stages in the field conditions FRANTOVA N., RABEK M., ELZNER P., SMUTNY V.	354
Transcript levels of <i>VRN1</i> , <i>PPD-D1</i> , <i>PPD-B1</i> and <i>PPD-A1</i> genes during different developmental stages of winter wheat FRANTOVA N., SMUTNA P., HOLKOVA L.	360
Auxin or sugar? Which has higher impact on bud outgrowth regulation? KUCSERA A., BALLA J., PROCHAZKA S.	366
Identification of powdery mildew (<i>Erysiphales</i>) species on ornamental perennial plants (<i>Asteraceae</i>) in the gardens of Mendel University in Brno MICHUTOVA M., POKORNY R., SAFRANKOVA I.	371
Short-term application of elevated temperature and drought influences the isotopic composition of winter wheat grains PERNICOVA N., URBAN O., CASLAVSKY J., KLEM K., TRNKA M.	377
Methodology of phenotypes selection of hemp (<i>Cannabis sativa</i> L.) for secondary metabolite production SCHREIBER P., BALOG N.	383

ANIMAL BIOLOGY

DNA barcoding and metabarcoding in forensic entomology: casuistic and future challenges OLEKSAKOVA T., KLIMESOVA V., SULAKOVA H.	390
Stallion semen cooling using different types of extenders SOUSKOVA K., RECKOVA Z., KOPEC T., BRUDNAKOVA M., FILIPCIK R.	394
Associations of <i>SOST</i> and <i>TNFSF11</i> genes polymorphisms with bone parameters in broilers STEINEROVA M., HORECKY C., KNOLL A., NEDOMOVA S., PAVLIK A.	399

TECHNIQUES AND TECHNOLOGY

Comparison of fatigue behaviour of AlSi10Mg CT samples prepared by casting and by additive technologies DVORAKOVA J., DVORAK K., CERNY M.	406
Alternative mechanical pre-treatment methods of hot-dip galvanising surface to increase of the organic coatings adhesion LOZRT J., VOTAVA J., SMAK R.	412

Comparison of stress action of real specimens and computer model during tensile testing PERNICA J., SUSTR M., DOSTAL P., VODAL M., SAROCKY R., BRABEC M., ZACAL J.	418
Hyperspectral imaging LED and incandescent light source comparison for food quality inspection ROUS R., ONDROUSEK V., JUZL M.	424
The evaluation of selected mechanical and physical properties of pelletized compost SINKOVA A., BURG P., MASAN V., CIZKOVA A.	430
Stability of intermetallic phases in the heat affected zone depending on shielding gases SMAK R., VOTAVA J., LOZRT J., POLCAR A.	436
Mathematical models for temperature-dependent viscosity of FAME and diesel blends TROST D., POLCAR A., FAJMAN M., VOTAVA J., CUPERA J., KUMBAR V.	442
The evaluation of lawn quality cut performed by a robot lawn mower VASTIK L., MASAN V., BURG P., ZEMANEK P.	448

APPLIED CHEMISTRY AND BIOCHEMISTRY

Exploring the pH-triggerable structure of siRNA-carrying liposomal nanoparticles as tools for treatment of hepatitis B KRATOCHVIL Z., DO T.	454
Pesticides and long-term denitrification conditions PANIKOVA K., BILKOVA Z., MALA J.	458
Identification of volatile compounds produced by <i>Laetiporus sulphureus</i> using OSMAC cultivation strategy SCHLOSSEROVA N., BLAHUTOVA A., VANICKOVA L.P.	464
Cross-linked-Pd0 polyethyleneimine catalyst for bioorthogonal chemistry TAKACSOVA P., PEKARIK V.	469
Molecularly imprinted polymers as a recognition element for the determination of disease markers VODOVA M., VLCNOVSKA M., BEZDEKOVA J., VACULOVICOVA M.	475
Copper and zinc in dogs: impact of sex, age, and diet on serum levels ZENTRICOVA V., PECHOVA A.	480

Determination of optimal insemination time in sheep by assessing cervical mucus arborization

Vojtech Pesan, Martin Hosek, Radek Filipcik, Katarina Souskova,

Martina Pesanova Tesarova

Department of Animal Breeding

Mendel University in Brno

Zemedelska 1, 613 00 Brno

CZECH REPUBLIC

vojtech.pesan@mendelu.cz

Abstract: Insemination and estrus synchronization are one of the most used biotechnological reproductive methods used in sheep breeding, but also in most other livestock species. Subsequent insemination values are influenced by several factors such as age, condition, health, hereditary establishment of the animals, quality of the insemination doses and the quality of the performance of the insemination itself. Another way to optimise the insemination values is to determine the optimal time for insemination, which varies between livestock species but may also vary slightly within the individuality of the individuals within the breed. One way of determining the optimal time for insemination is to assess the arborisation of cervical mucus, which forms different types of structures after crystallisation at different stages of estrus. Changes in the arborisation structures are influenced by endocrine changes, by the action of oestrogen on the cervical glands, where electrolytes are concentrated and which, after association with mucin and subsequent crystallisation, form typical structures. The experiment took place from September 2020 (synchronization of estrus and insemination) to March 2021 (end of lambing). In this experiment, it was found that the type of crystallization structures at the time of insemination has a conclusive effect on the subsequent pregnancy rate. Animals with "V" type crystallization achieved the best pregnancy rate (80%).

Key Words: arborization, cervical mucus, insemination, sheep, Zwartbles

INTRODUCTION

Small ruminants are generally seasonally polyestrous animals. Sexual activity is influenced by the length of the light day and its shortening affects the onset of the reproductive season. In tropical animals, reproductive activity is not affected by seasonal variation and estrus can occur throughout the calendar year. The methods used to synchronize estrus or induce estrus depend on the season: either breeding season, transitional period and nonbreeding season (Romano 2021).

Synchronisation of estrus (whether using natural or artificial methods) is used mainly to save time, reduce labour intensity and the associated economic demands of breeding, because of more accurate recording of animals, facilitating the assessment of health status and the possibility of scheduling births into a targeted period, which is associated, for example, with greater seasonal sales of lambs or dairy or meat products. The synchronisation of estrus results in turntable lambing, which allows group weaning and subsequent rearing in larger and more balanced groups of lambs (Štolc et al. 2007, Whitley and Jackson 2004).

Thanks to the subsequent breeding of the sheep (natural breeding, insemination or a combination of both, for example by forming harems after insemination) we are able to select the best males, shorten the period of breeding and know the approximate date of birth, thanks to the synchronisation of estrus, we can situate it in a suitable period to be able to produce lambs at Easter and Christmas, when demand is highest, or to focus on off-season production of lambs for slaughter (Kuchtík et al., 2007; Štolc et al., 2007).

After the synchronization of estrus, the choice of the method of insemination is important. Due to the lower labour, time and economic requirements (compared to the laparoscopic method) and the good results of insemination, which are around 60%, vaginal insemination with vaginal speculum and intracervical deposition is mainly used (Kuchtík et al. 2007). Due to the very complex

structure of the cervical septum, intracervical deposition of the insemination dose is only possible to a depth of one to three centimetres (Leethongdee 2010). The success rate of insemination increases significantly with greater depth of penetration. However, this is influenced by cervical openness, breed affiliation and age of the ewe (Eppleston and Maxwell 1995). (Eppleston and Maxwell (1995) reported that, on average, it is possible to insert the insemination pipette to a cervical depth of 1 cm in 31% of animals, 2 cm in 31% of animals, 3 cm in 30% of animals and only 8% of inseminated animals to a depth exceeding 4 cm.

Therefore, determining the optimal stage of estrus and the optimal time of insemination is essential for insemination. The activity of the females, changes in the genital organs (swelling, redness, quantity and quality of cervical mucus, openness of the cervix, etc.) are monitored.

The average length of an estrus cycle is 17 days and estrus lasts 24 to 36 hours in ewes. Ovulation occurs towards the end of estrus (24 to 27 hours after the start of estrus). The ovulation rate is between 1 and 3 eggs per cycle and increases with age, peaking between 3 and 6 years of age and then gradually decreasing. After ovulation, the egg is capable of fertilization for 10 to 25 hours (Gimenez and Rodning 2007). Čunát et al. (2013) state that in ewes with natural onset of estrus, insemination is best performed 12 to 18 hours after the onset of estrus and in ewes synchronized with intravaginal sponges 50 to 60 hours after removal.

One of the methods of determining the optimal insemination time is to assess the arborization (crystallization) of cervical mucus, which forms different types of structures after crystallization in the different stages of estrus. Changes in arborization structures are influenced by endocrine changes, namely the action of estrogen on the cervical glands/epithelium, where electrolytes are concentrated and form typical structures after association with mucin and subsequent crystallization (Cortés et al. 2014).

Several authors have addressed this issue in cattle. There are not many publications with results of arborization evaluation in sheep (or goats), especially studies related directly to the determination of the appropriate time of admission/insemination. Recent studies include, for example, the evaluation of cervical mucus in goats – Fonseca et al. (2017), Maddison et al. (2017), or the evaluation of crystallization forms from saliva smears in sheep – Gonçalves et al. (2020).

MATERIAL AND METHODS

A total of 51 Zwartbles sheep were monitored in this experiment. The age of the sheep ranged from 2 to 8 years with a BCS (body condition score) of 3. The sheep were housed on the family farm of Mr. Ing. Martin Hošek Ph.D. in Mohelno. The experiment itself was conducted from September 2020, when estrus synchronization was performed using intravaginal sponges, until March 2021, when the lambing of the group of animals under study ended. Before the actual insemination (mid-October 2020), the collection of the rams' ejaculate, its evaluation and dilution were carried out. Pregnancy diagnosis was carried out in mid-December 2020.

Inseminated ewes and breeding rams used for ejaculate collection and insemination doses were fed on silage from stale forage and hay ad libitum. As flushing, 200 g of fodder potatoes and 400 g of cereals per head were used one month before insemination and one and a half months after insemination. Flushing was mainly used to modify the condition of the animals, improve ejaculate quality, accentuate estrus symptoms and improve pregnancy rates.

To synchronise the estrus, which took place at the end of September and the beginning of October 2020, intravaginal sponges (tampons) (Ovigest - medroxyprogesterone acetate 60 mg, Laboratorios Hipra, Spain) were used, which were injected into the sheep vagina for 14 days. After their subsequent removal, sheep were injected intramuscularly with lyophilized serum gonadotropin (PMSG – 0.2 ml/sheep = Sergon 200 IU, Bioveta Ivanovice, CZ).

Ejaculate was collected from rams into an artificial vagina on the day of insemination (Minitübe, Germany) after the ejection on an ewe in heat (fixed on a fixation pad). In case of a smaller quantity of collected ejaculate, a second jump was performed. The ejaculate was then macroscopically and microscopically evaluated and diluted to the required amount according to sperm concentration and motility. The diluted ejaculate ready for insemination was stored in plastic containers cooled to 3 °C in a refrigerated box until the time of insemination.

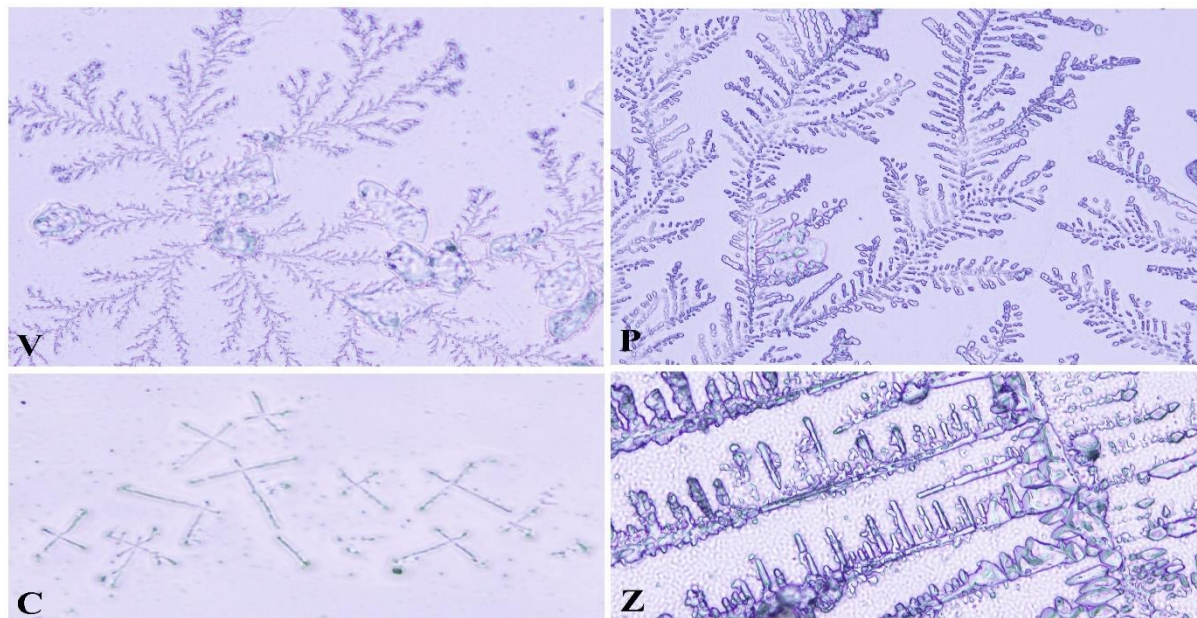
For each inseminated ewe, several parameters (colour and amount of cervical mucus, cervical openness, genital blood supply and behavioural activity – willingness to mate) were monitored before insemination and a cervical mucus sample was taken for arborization examination. Prior to insemination, the external genitalia were cleaned and disinfected, and the vagina was inspected using an ovine vaginal speculum. Each insemination dose of cooled dilute ejaculate was injected in a quantity of 0.4 ml through the vaginal speculum using a plastic loader into the cervix to a depth of approximately 1 to 2 centimetres.

The cervical mucus sample was collected using a plastic loader through the vaginal speculum before insemination. This sample was transferred to a microscope slide immediately after collection and then smeared at an angle of 45°. Once the cervical mucus had sufficiently dried on the slide, it was labelled (date and time of collection, ewe number) and placed in a plastic box. The smears were then examined microscopically (Olympus BX51TF; Olympus Optical CO., LTD, Tokyo, Japan). At 200× magnification and their crystallization type were evaluated (examples of crystallization types in Figure 1). The procedure of smear formation, their evaluation and crystallization types were determined according to standard methodologies for assessing cervical mucus arborization in cattle (Cortés et al. 2014, Stádník et al. 2013). The individual samples were divided into different groups according to the type of crystallization (V: twigg-shaped, V + P: twigg-shaped-clubmosses, P: clubmosses, P + K: clubmosses-fern frond, K: fern frond, Z: swollen, C: cellularization).

Sequence of crystallization types during estrus is: Type "V" (pre-estrus period), type "V+P", type "P" (beginning of estrus), type "P+K" (half of estrus), type "K" (second half of estrus). The undesirable structures include type "Z" (swollen crystallization - post-estrus period) and "C" (cellularization - occurring during inflammation) (Stádník et al. 2013).

Type "V" is characterised by fine structures that resemble twigs, type "P" is characterised by branching structures that resemble plants of the genus *Lycopodium* (clubmosses), type "K" is characterised by a shape that resembles palm leaves or fern frond. The swollen crystallisation of type "Z" produces enlarged branched crystals. Type "C" crystallizes into simple forms composed of several short segments.

Figure 1 Examples of crystallization types



In Figure 1 are the examples of crystallization types: type V (twigg-shaped: pre-estrus), type P (clubmosses: beginning of estrus), type C (cellularization: occurring during inflammation) and type Z (swollen: post-estrus).

Preliminarily, the value of pregnancy rate was determined during pregnancy diagnosis and control, which took place on days 43 and 83 after insemination using OVI-SCAN ultrasound (BCF technology, Scotland). The exact value of the pregnancy rate was determined by recording the date and time of insemination and insemination. Subsequently, trimming values were compared with each type of cervical mucus crystallisation: post-estrus period).

STATISTICA 12.0 was used for statistical evaluation of the results.

RESULTS AND DISCUSSION

The cervical mucus samples were divided into several groups according to the type of crystallization. These types of crystallization structures change during estrus.

Table 1 Total frequency of crystallization structures

Type of crystallisation	Number of samples (n)	Frequency (%)	Sx	Vx
V	15	29.4	10.05181023	0.66067239
V+P	16	31.4		
P	7	13.7		
P+K	6	11.8		
Z	3	5.9		
C	4	7.8		

Legend: Sx – Standard deviation, Vx – Coefficient of variation

Table 1 shows the frequency of the individual crystallization structures. Most of the inseminated sheep (60.8%) had "V" type crystallization (29.4%) and a mixed form of "V"+"P" type crystallization (31.4%). In 25.5% of inseminated sheep, "P" and mixed forms of "P"+"K" crystallization occurred. Crystallisation of the "K" type did not occur in the animals studied. In 5.9% of the inseminated sheep, a swollen crystallization of the "Z" type occurred, and in 7.8% of the animals, a crystallization of the "C" type occurred.

Table 2 Influence of crystallization type on pregnancy rate

Type of crystallisation	Number of samples (n)	Number of pregnant sheep (n)	Pregnancy rate (%)
V	15	12	80.0
V+P	16	7	43.8
P	7	4	57.1
P+K	6	3	50.0
Z	3	2	66.7
C	4	0	0.0
			P = 0.002858
Σ	51	28	54.9

Legend: P < 0.01 = high statistically significant differences

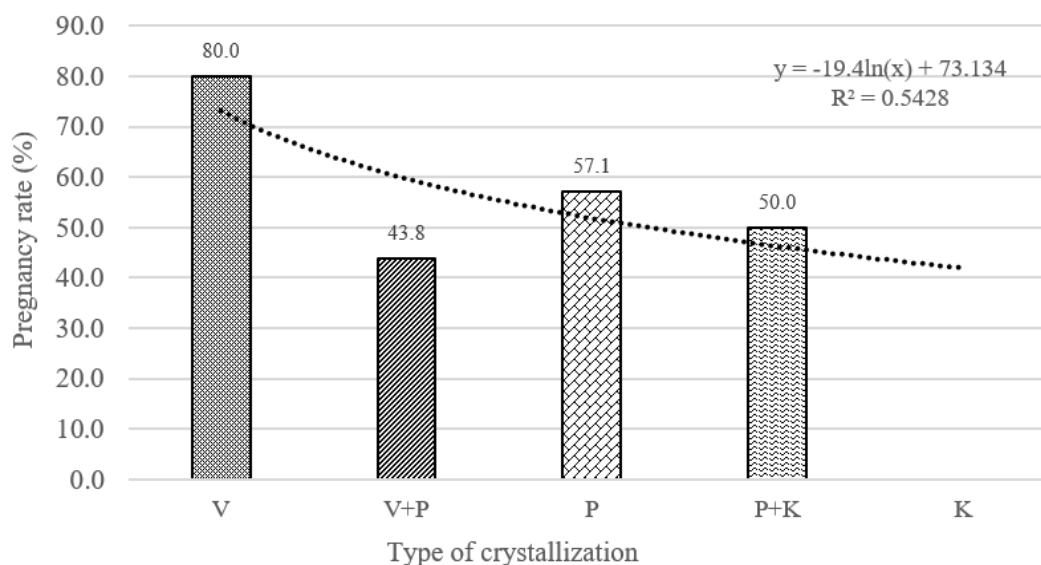
According to Stádník et al. (2013), the optimal form of crystallization structures (suitable time for insemination) is the "P"+"K" and "K" type, which occurs in cattle in the second half of estrus. According to the results shown in Table 1, it can be assumed that most of the inseminated animals were inseminated prematurely around the beginning of estrus (type "V", "V"+"P", "P").

Table 2 and Figure 2 show the effect of crystallization types on the pregnancy rate. The highest value of pregnancy (80.0%) was found in animals that had a "V" type crystallization pattern. For the "V+P", "P" and "P+K" types, a total of 48.3% (14 pregnancies out of 29 inseminated) were crystallized. The type of crystallization structures "V", "V"+"P", "P" and "P"+"K" had a highly statistically significant effect (P = 0.002858) on the pregnancy rates.

In cattle, the highest values of pregnancy at insemination are reached at the time of crystallization structures "P" to "K". On the contrary, the lowest values of pregnancy are achieved by animals with atypical crystallization (Ježková et al. 2007, Ježková et al. 2008, Stádník et al. 2013).

The value of pregnancy in inseminated animals with "Z" type crystallization was 66.7%. As this is a structure occurring in cattle at the end of estrus/postpartum, the higher values (compared to similar observations - see Stádník et al. (2013): 20.0%) are probably due to the low number of animals with this type of crystallisation. The lowest values of pregnancy were found for crystallization type "C" (0.0%), which occurs in inflammation.

Figure 2 Influence of crystallization type on pregnancy rate



The overall rate of pregnancy rate after insemination was 54.9% (28 pregnancies out of 51 inseminated). This is below average, compared to the average of 60% reported by Kuchtík et al. (2007).

CONCLUSION

In this research, it was found that the type of crystallization of cervical mucus at the time of insemination had a conclusive effect on the subsequent pregnancy values. Animals with type "V" crystallization had the highest values of pregnancy and animals with atypical type "C" crystallization had the lowest values.

The most common types of crystallization in the animals studied were the "V" type and the mixed "V"+"P" form. These forms occur in cattle in the pre-estrus and early estrus. In relation to the temporal sequence of changes in crystallization patterns reported in cattle, these values are opposite, with a decreasing trend in the values of pregnancy.

The resulting values for the different types of crystallisations differ from those reported for cattle. To obtain more accurate results, it is necessary to repeat the experiment on a larger number of animals and to determine at what times during estrus the changes in each type of crystallisation occur and, in particular, whether the sequence of changes in crystallisation structures during estrus is identical to the results reported for cattle.

ACKNOWLEDGEMENTS

The research was financially supported by the grant no. AF-IGA2021-IP093.

REFERENCES

- Čunát, L. et al. 2013. Využití inseminace ovcí v chovatelské praxi, 1st ed., Praha: Česká zemědělská univerzita.
- Cortés, M.E. et al. 2014. Crystallization of Bovine Cervical Mucus at Oestrus: An Update. *Revista de Medicina Veterinaria*, 28(28): 103–108.
- Eppleston, J., Maxwell, W.M.C 1995. Sources of variation in the reproductive performance of ewes inseminated with frozen-thawed ram semen by laparoscopy. *Theriogenology*, 43(4): 777–788.
- Fonseca, J.F. et al. 2017. Evaluation of cervical mucus and reproductive efficiency of seasonally anovular dairy goats after short-term progestagen-based estrous induction protocols with different gonadotropins. *Reproductive Biology*, 17(4): 363–369.
- Gimenez, D., Rodning, S. 2007. *Reproductive Management of Sheep and Goats*. Alabama A&M and Auburn Universities [Online]. Available at: <https://ssl.acesag.auburn.edu/pubs/docs/A/ANR-1316/ANR-1316-archive.pdf>. [2021-08-02].

- Gonçalves, A.S. et al. 2020. Saliva Crystallization in Sheep Subjected to Estrus Induction and Synchronization Protocols. *Acta Scientiae Veterinariae*, 48(1): 1719.
- Ježková, A. et al. 2007. Study of cervical mucus crystallization, sperm survival in cervical mucus and reproductive results of Holstein cows. In *Proceedings of 58th Annual Meeting of the European Association for Animal Production*. Ireland, 26–29 August. Dublin, pp. 235–235.
- Ježková, A. et al. 2008. Factors affecting the cervical mucus crystallization, the sperm survival in cervical mucus, and pregnancy rates of Holstein cows. *Journal of Central European Agriculture*, 9(2): 377–384.
- Kuchtík, J. et al. 2007. *Chov ovcí*. 1st ed., Brno: Mendelova zemědělská a lesnická univerzita v Brně.
- Leethongdee, S. 2010. Development of trans-cervical artificial Insemination in sheep with special reference to anatomy of cervix. *Suranaree Journal of Science and Technology*, 17(1): 57–69.
- Maddison, J.W. et al. 2017. Oestrus synchronisation and superovulation alter the cervicovaginal mucus proteome of the ewe. *Journal of Proteomics*, 155(1): 1–10.
- Romano, J.E. 2021. Hormonal Control of Estrus in Goats and Sheep. *MSD Manual: Veterinary Manual* [Online]. Available at: <https://www.msdevetmanual.com/management-and-nutrition/hormonal-control-of-estrus/hormonal-control-of-estrus-in-goats-and-sheep>. [2021-08-01].
- Stádník, L. et al. 2013. Stanovení vlivu krystalizace a metabolických indikátorů cervikálního hlenu na přežitelnost spermií u skotu, Výzkumný ústav pro chov skotu: Česká zemědělská univerzita v Praze.
- Štolc, L. et al. 2007. *Základy chovu ovcí*. 3st ed., Praha: Ústav zemědělských a potravinářských informací.
- Whitley, N.C., Jackson, D.J. 2004. An update on estrus synchronization in goats: A minor species. *Journal of Animal Science*, 82(13): 270–276.

Name of publication:	MendelNet 2021 <i>Proceedings of 28th International PhD Students Conference</i>
Editors:	Assoc. Prof. Ing. Radim Cerkal, Ph.D. Ing. Natálie Březinová Belcredi, Ph.D. Ing. Lenka Prokešová
Publisher:	Mendel University in Brno Zemědělská 1665/1 613 00 Brno Czech Republic
Year of publication:	2021
Number of pages:	492
ISBN:	978-80-7509-821-4

Contributions are published in original version, without any language correction.

